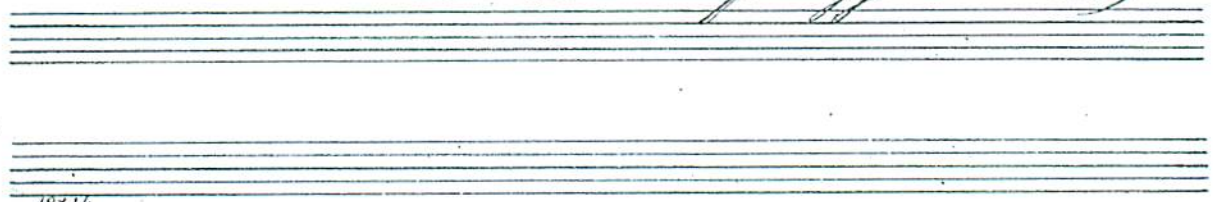


*Cumha Dhonnchúill a Sagarín. ii*  
*Donald Mac Donnell of Saggair's Lament.*



18x14

*2/4.*

*Var. 1.*

*Doubling.*

*Bis.*

*Bis.*

*Bis.*

*Bis.*

*Cran-leafh*

*Bis.*

*Doubling.*

*Bis.*

*Bis.*

*Bis.*

*6.*