

*Bruinneachadh na Sutherlandaich*

*The Sutherland's Gathering*

22 x 12

*N. 13.*

The main musical notation consists of five staves of music in treble clef. The first staff begins with a large, decorative initial 'N. 13.' followed by a treble clef. The music is written in a single system with various notes, rests, and accidentals. There are several 'x' marks above some notes, possibly indicating fingerings or specific articulations. The notation includes various rhythmic values and dynamic markings such as 'f' and 'p'. The piece concludes with a double bar line and repeat dots.

*Variation 1.*

The first variation is written on a single staff in treble clef. It begins with a treble clef and a 2/4 time signature. The music features a series of eighth and sixteenth notes, with some notes marked with 'x'. It ends with a double bar line and repeat dots.

The second variation is written on a single staff in treble clef. It begins with a treble clef and a 2/4 time signature. The notation includes various notes, rests, and accidentals, with some notes marked with 'x'. It concludes with a double bar line and repeat dots.

*Doubling*

The 'Doubling' variation is written on a single staff in treble clef. It begins with a treble clef and a 2/4 time signature. The music consists of a series of eighth and sixteenth notes, with some notes marked with 'x'. It ends with a double bar line and repeat dots.

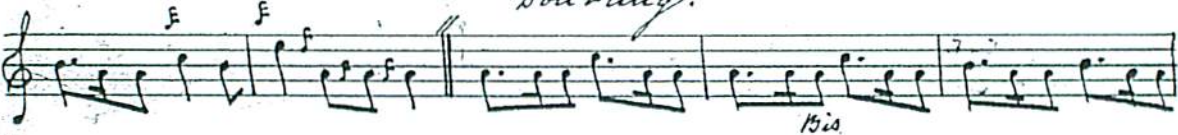
The final variation is written on a single staff in treble clef. It begins with a treble clef and a 2/4 time signature. The notation includes various notes, rests, and accidentals, with some notes marked with 'x'. It concludes with a double bar line and repeat dots. The initials 'N. S.' are written at the end of the staff.



*Variation. 2.*



*Doubleing.*



*Crum-luath.*

Handwritten musical notation for the 'Crum-luath' section, consisting of seven staves of music. The notation includes various rhythmic values and articulation marks. The first staff begins with a treble clef and a key signature of one flat. The second staff ends with a double bar line and repeat dots. The third staff starts with a '3.' marking and a '10is' annotation. The fourth staff features a '1st' marking above a dashed line and a '3.' marking at the end. The fifth and sixth staves continue the melodic line with various rhythmic patterns.

*Doubling.*

Handwritten musical notation for the 'Doubling' section, consisting of seven staves of music. The notation includes various rhythmic values and articulation marks. The first staff begins with a treble clef and a key signature of one flat. The second staff ends with a double bar line and repeat dots. The third staff starts with a '3.' marking and a '10is' annotation. The fourth staff features a '1st' marking above a dashed line and a '3.' marking at the end. The fifth and sixth staves continue the melodic line with various rhythmic patterns. The seventh staff concludes with a double bar line and the instruction 'D.C. Thema.'