

The Cant of Seafort his Salute.

1068

The first three staves of the handwritten musical score. Each staff begins with a treble clef and a key signature of one sharp (F#). The notation consists of a single melodic line with various note values, including minims, crotchets, and quavers, along with rests and repeat signs.

Inor luath

The next three staves of the score. The fourth staff begins with the section title 'Inor luath' written in cursive. The notation continues with a single melodic line, featuring more complex rhythmic patterns and repeat signs.

Doubling

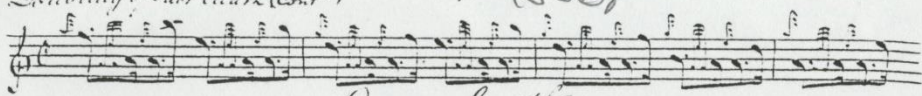
of Inor-luath

The final four staves of the score. The sixth staff begins with the section title 'Doubling of Inor-luath' written in cursive. The notation continues with a single melodic line, showing a more intricate and rhythmic texture, and concludes with a double bar line.

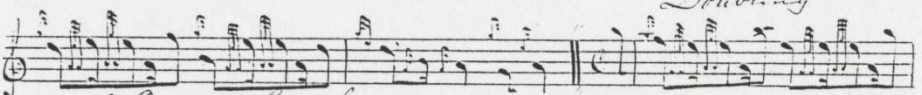
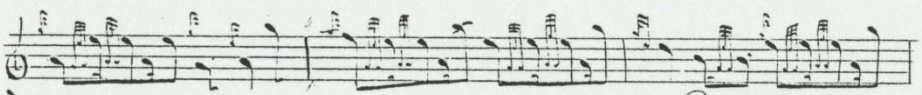
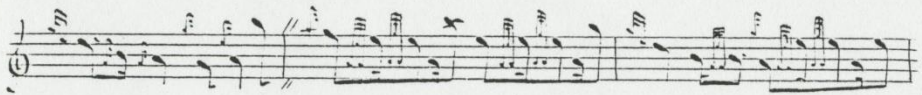
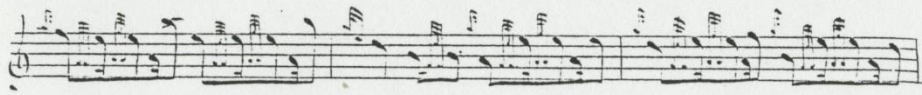
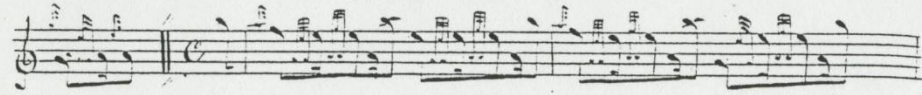
The Court of Seaforth's Article

Doubling of Crun-luath (Cont.)

1568

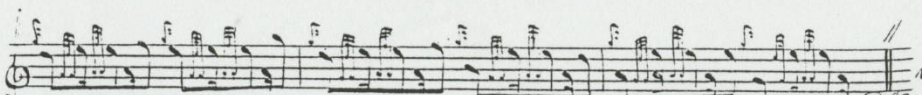
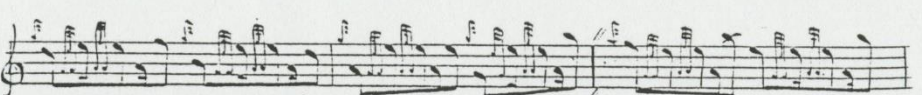
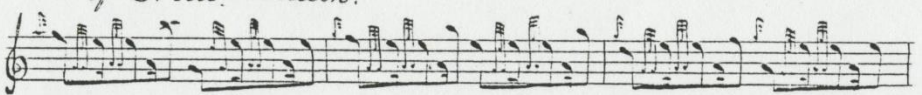


Crun-luath



Doubling

of Crun-luath.



J.C.